

Haier

Super Match Multi-Split System

Heat or cool multiple rooms with one outdoor unit.



Our Brand

Empowering smarter, happier, and healthier living, Haier leads with smart technologies across a range of home appliances. Haier is the number one brand of connected air conditioner (including smart air conditioner) and the number one brand of healthy Self-Clean air conditioner in the world, measured in terms of retail sales volume in 2023.*



Award Winning

#1 SMART AIR
CONDITIONING BRAND
IN THE WORLD*



Global Scale

OPERATING IN
160 COUNTRIES



Innovation + Quality

10 R&D CENTRES
GLOBALLY



Service + Support

NATIONWIDE
SUPPORT

Heating and cooling expertise

As one of the world's largest heating and cooling brands, Haier, founded in China in 1984, offers a comprehensive range of industrial, commercial, and residential air conditioning and water heating products. These are trusted in homes and businesses across the globe.

In Australasia, Haier's strength is complemented by Fisher & Paykel, a trusted brand that is part of the Haier Group. Together, they leverage Haier's global reach and Fisher & Paykel's local service network to provide high-quality products and support to our customers in Australia and New Zealand.

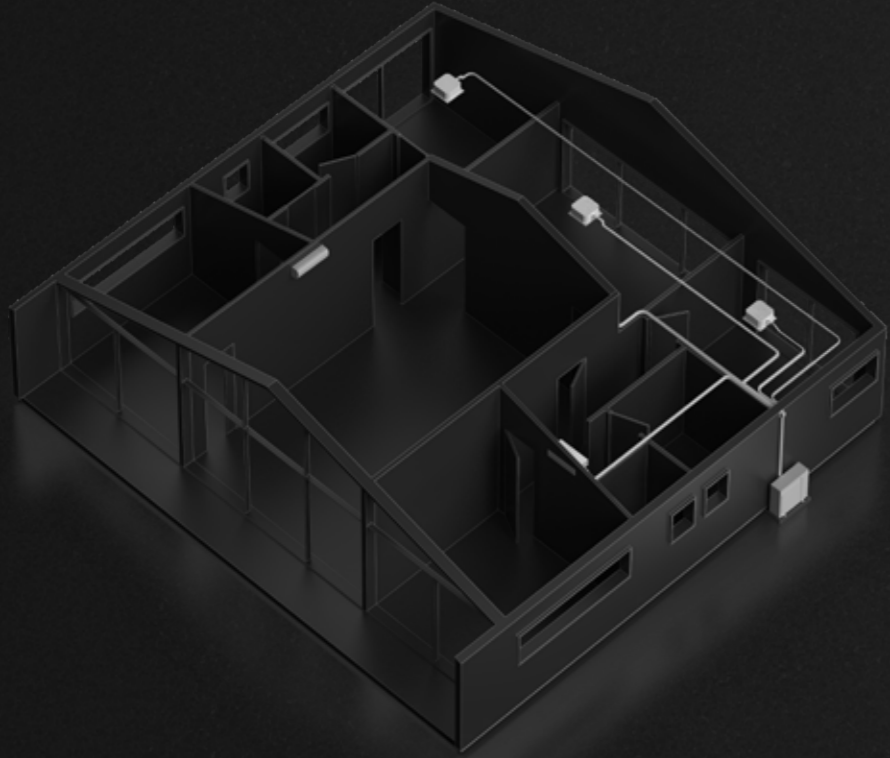
5 year warranty

Enjoy peace of mind with a 5 year manufacturer's warranty on products with less than 25kW system cooling capacity.

* Data source: Euromonitor International Ltd., measured in terms of retail sales volume in 2023, based on research completed by February 2024. Connected air conditioner is defined as air conditioners with connectivity capability to communicate with other appliances and/or other devices and/or consumers.

Multi-Split Systems Benefits

Multi-room or whole-of-home heating and cooling with independent temperature control using only one outdoor unit connected to multiple indoor units.



Mix and match

Enjoy the flexibility to mix and match a range of different indoor units throughout your home to heat/cool a few rooms or an entire house. When heating or cooling multiple rooms, Multi-splits are usually more economical than purchasing four or more individual split systems.

Control air movement

As each room is heated or cooled with an independent indoor unit, air is not being recirculated through the home between rooms.

Space saving

With one compact outdoor unit connecting to multiple individual indoor units, you remove the need to install multiple outdoor units for each indoor unit. Multi-splits are a great option when you want whole-of-home comfort, but do not have ceiling space for a ducted system.

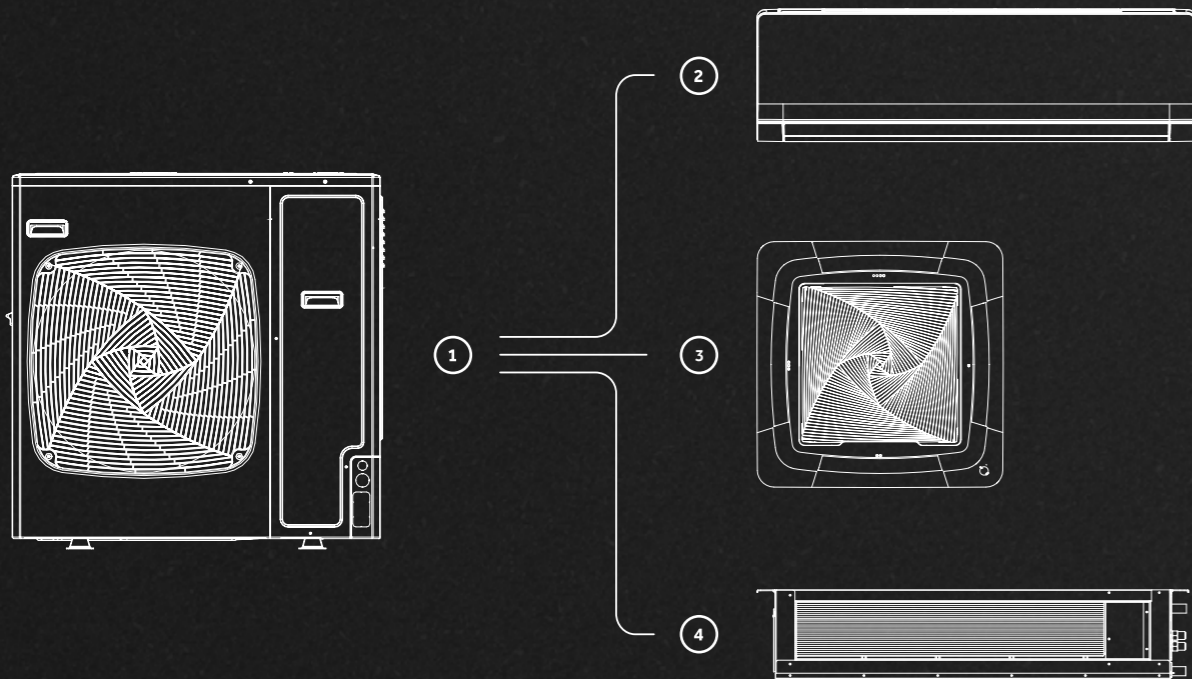
Independent temperature control

A Multi-split system lets you conveniently control the temperature in each room independently. Each indoor unit can be independently turned off and on and the temperature controlled using individual remotes to provide tailored comfort for each room.



Super Match

The Super Match range offers a wide range of possible indoor unit and outdoor unit combinations, for a customised heat pump solution for your space.



Super Match pairing

The Super Match outdoor unit is connectable to up to five indoor units. Heat or cool your home with any set of indoor units that work for you. This could include only using: wall mounted units; ceiling cassettes; or bulkhead units – or by using a combination.

① Reverse Cycle Outdoor (R32)

One unit to heat or cool multiple rooms in your home. There are five capacities to select from to suit your requirements.

③ Cassette

Sleek modern grille design.

② Wall Mounted

Anti-viral, anti-bacterial UV Protect air purification as well as built in SmartHQ™ Wi-Fi control.

④ Slim Ducted

Ultra compact to be installed in a bulkhead. Includes built in anti-viral, anti-bacterial UV Protect.

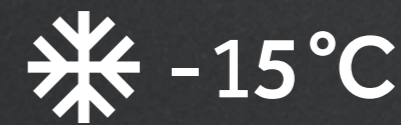
Super connect-ability

The Super Match outdoor unit is connectable to up to five indoor units. In most homes, where living areas are used throughout the day and bedrooms are used at night, Haier Super Match redistributes capacity allowing one outdoor unit to support units up to 192%* of its rated capacity, conditioning your entire home economically.

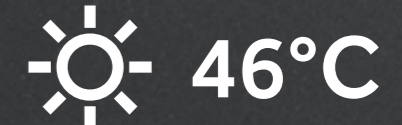
Expansive operating range

Performance in most New Zealand climates from -15°C to 46°C ambient air temperature. Outdoor coils are also protected with our anti-corrosion blue-fin coating on the coil to support performance.

LOWEST OPERATING RANGE

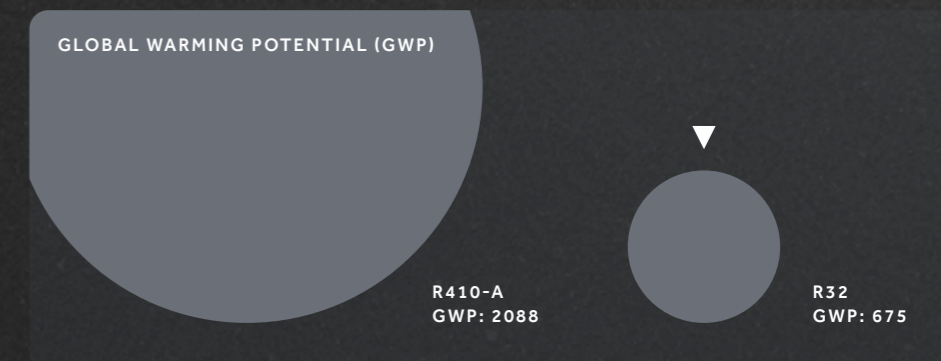


HIGHEST OPERATING RANGE



Respect for the planet

R32 – the refrigerant used in your Multi-split system to transfer heat between the indoor and outdoor units – has a Global Warming Potential (GWP) of 675, 66% lower than alternative refrigerants like R410A.



Connected

The global No. 1 connected air conditioner brand,** Haier makes life easier with convenient control of your Wi-Fi enabled appliances through the SmartHQ™ app. SmartHQ™ Wi-Fi is built into the wall hung indoor units, and can be added via an optional accessory for slim ducted and cassette indoor unit types.

Clean air

In addition to not transferring air through ductwork into other rooms, with the wall-mounted and slim ducted units, UV Protect helps to deliver clean air to your room using Health mode. Built-in LED UV lights kill airborne Staphylococcus aureus bacterial and the H3N2 virus at more than 91% effectiveness under specific test conditions.***

* 8kW 4U80S2PR1FA Model.

** Data source: Euromonitor International Ltd., measured in terms of retail sales volume in 2023, based on research completed by February 2024. Connected air conditioner is defined as air conditioners with connectivity capability to communicate with other appliances and/or other devices and/or consumers.

*** Independent testing has found 91.47% elimination of the H3N2 virus in a 30m² closed room and 92.78% of Staphylococcus aureus bacteria in a 10m² closed room, for two hours on Health mode at the highest fan speed.

Efficient Design

The unique design of the Haier Super Match Multi-Split System gives you more flexibility, not only to mix and match indoor units, but also in the sizing of your system, through its high maximum connectable capacity.



High maximum connectable capacity

Haier Super Match can connect up to 192%* of the nominal capacity of the system. This means that rather than needing an outdoor unit that is sized to manage the combined total capacity of every indoor unit, assuming not all units would be used at the same times, a smaller outdoor unit can be selected.

Reduce your costs

By more appropriately sizing your system to real world usage – like the typical situation where living spaces are heated or cooled in the day, and bedrooms at night – you can select an outdoor unit with a lower nominal capacity, but sufficient maximum connectable capacity.

Get clever

The flexibility of Super Match allows you to design a system that is tailored to how you live, that isn't inflated with extra capacity for rare 'what if' scenarios and is more considered about energy use.

Sizing your system

What do I need to cool or heat?

Which rooms do you want to condition, how large are they, and are they all used at the same time? Do you want wall-mounted units in all rooms or do you want something more discrete and built in, where a ducted unit may be more appropriate?

Category	Rated cooling capacity				
	2.0	2.5	3.5	5.0	7.1
Wall Mounted	●	●	●	●	●
Cassette		●	●	●	●
Slim Ducted		●	●	●	●

Determine which outdoor unit you would like

Add up the capacities of all your indoor units, and then select an outdoor that suits, by referring to the table below. For example, if you want three indoor units, with a total capacity of 10kW, you could select between the 7, 8 or 10kW outdoor unit. Please consult with your qualified installer on your requirements.

Nominal capacity (cooling)	Nominal capacity (heating)	Maximum indoor quantity	Minimum connectable capacity	Maximum connectable capacity	Maximum connectable diversity %
5.5	5.8	3	2.0kW	8.5kW	155%
7.1	8.0	4	2.0kW	13.6kW	192%
8.0	8.8	4	2.0kW	14.2kW	178%
10.0	10.0	5	2.0kW	15.0kW	150%
12.0	12.0	5	2.0kW	18.7kW	156%

*7.1kW 4U71S2PR1FA Model

Respect for the Planet

Low Global Warming Potential (GWP) refrigerants and technology to improve energy efficiency.



Low GWP

R32 Refrigerant has a Global Warming Potential (GWP) of 675, 66% lower than alternative refrigerants like R410A.

Zero Ozone Depletion Potential

Damage by chemical compounds of the ozone layer is measured by Ozone Depletion Potential (ODP). R32 has a ODP of 0, which means it does not harm the ozone layer.

Inverter technology

An inverter compressor delivers the precise amount of heating or cooling capacity required, eliminating waste and minimising energy consumption.

Connected

In addition to the individual controllers, you can also control your Multi-split system through the SmartHQ™ app on your phone.*

Control from anywhere

Arrive home to comfort by remotely controlling your heat pump from anywhere.

Connected home

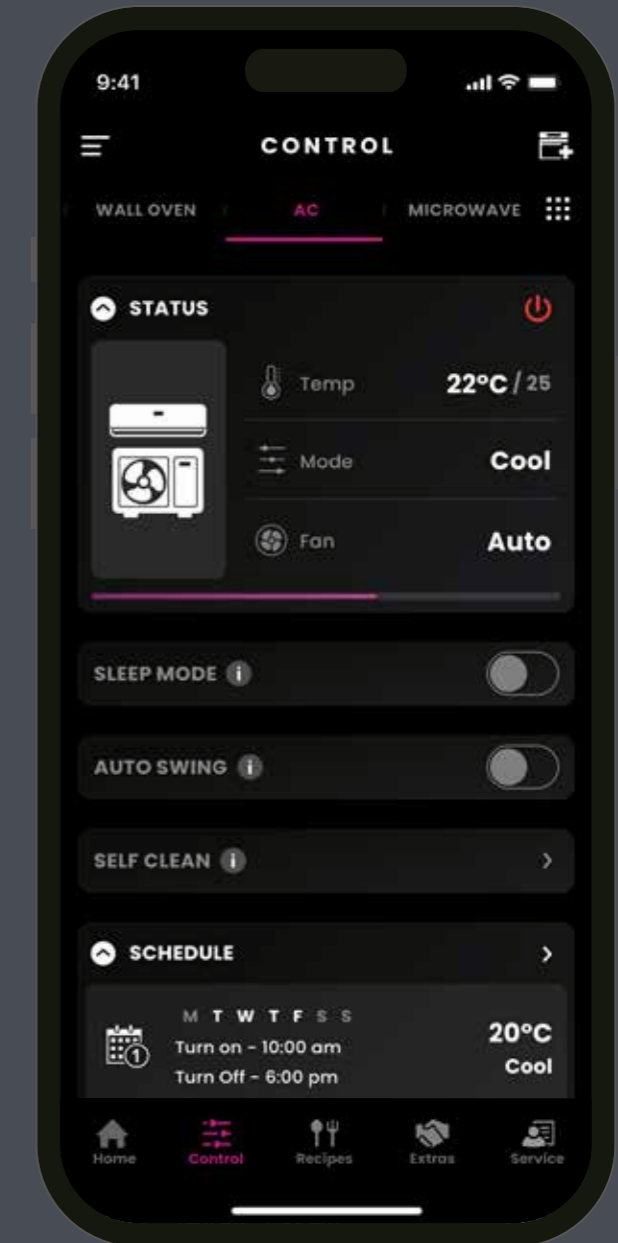
With Haier and Fisher & Paykel appliances able to be connected to the SmartHQ™ app, you can check in and manage all your other connected appliances, as well as control your heat pump.

Intuitive hands-free control

With voice control through Google Home Assistant or Amazon Alexa you can control your heat pump and ensure the perfect environment without getting off the couch. Try commands like 'Set the heat pump to 20 degrees', or 'Turn off the heat pump'.

Control and monitor

Control temperature, operating mode and fan speed, all from your SmartHQ™ app. Check if you remembered to turn the heat pump off, or set up a schedule to heat or cool your room to the perfect temperature.



* SmartHQ™ Wi-Fi is built into the wall hung indoor units, and can be added via an optional accessory for slim ducted and cassette indoor unit types



Wall-Mounted 2 - 7kW

Maintain the perfect temperature with clean, fresh air and even more control of your heat pump thanks to Wi-Fi and voice control.



UV Protect

UV Protect helps to deliver clean air to your room using Health mode, with built-in LED UV lights that kill airborne Staphylococcus aureus bacteria and the H3N2 virus at more than 91% effectiveness under specific test conditions.*

Continuously clean air

Air is cleaned through a combination of air filtration through the Exquisite Filter, an additional tri-colour filter as well as UV Protect sterilisation.

Intelligent airflow

Highly engineered airflow to automatically direct warm or cool air for ideal air circulation, air throw of up to 20m and Turbo Cool for fast cooling relief, all designed to create consistent comfort.

* Independent testing has found 91.47% elimination of the H3N2 virus in a 30m² closed room and 92.78% of Staphylococcus aureus bacteria in a 10m³ closed room, for two hours on Health mode at the highest fan speed.

Slim Ducted 2.5 - 7.1kW

Tucked into a bulkhead, this Slim Ducted provides discrete airflow.



Ultra compact design

With a height of only 185mm and a depth of 420mm, the slim ducted unit is able to fit into small bulkheads, creating flexibility in installation. Rear or bottom return air options, as well as a built in drain pump, add to its installation flexibility.

UV Protect

UV Protect helps to deliver clean air to your room using Health mode, with built-in LED UV lights that kill airborne Staphylococcus aureus bacteria and the H3N2 virus at more than 91% effectiveness under specific test conditions.*

3D airflow grille

Available as an optional accessory, the 3D airflow grille provides airflow control via motorised louvres, and also closes when the system is turned off.

4 Way Compact Cassette 2.6 - 7.1kW

Compact ceiling mounted cassette unit with sleek modern grille design.



Four-way air flow

Ideal for large open plan spaces, the louvres are designed to direct airflow far and wide for even temperature distribution.

Ultra quiet

The Helix fan blade design with a diffuser has been engineered to reduce noise from that of a standard fan, creating a quieter environment.

Flexible installation

Designed to provide the ability for fresh air intake with a fresh air knockout, delivering fresh air into the room. Also includes a built in drain pump.

* Independent testing has found 91.47% elimination of the H3N2 virus in a 30m2 closed room and 92.78% of Staphylococcus aureus bacteria in a 10m3 closed room, for two hours on Health mode at the highest fan speed.

Reverse Cycle Outdoor (R32) Specifications

Model 3U55S2PR1FA (5.5kW)
 Model 4U71S2PR1FA (7.1kW)
 Model 4U80S2PR1FA (8.0kW)

Model 5U100S2PS1FA (10.0kW)

Model 5U125S2PN1FA (12.0kW)



Model/Outdoor unit				3U55S2PR1FA	4U71S2PR1FA	4U80S2PR1FA	5U100S2PS1FA	5U125S2PN1FA	
Maximum connected quantity of indoor units				3	4	4	5	5	
Performance data	Capacity	Cooling	kW nom	5.5	7.1	8.0	10.0	12.0	
			(min-max)	2.1-6.6	2.4-8.7	3.2-9.5	3.2-11	3.2-13.8	
		Heating	kW nom	5.8	8.0	8.8	10.0	12.0	
			(min-max)	1.7-7.2	3.1-10	4.4-10.5	4.4-11.5	4.4-14.3	
	Rated power input	Cooling	kW nom	1.4	2.0	2.4	2.9	3.5	
			(min-max)	0.55-2.5	0.55-3.4	0.55-3.5	0.55-4.1	0.55-5.2	
		Heating	kW nom	1.4	2.0	2.3	2.4	2.9	
			(min-max)	0.55-2.2	0.55-3.1	0.55-3.4	0.55-3.4	0.55-4.3	
EER/COP			3.99/4.20	3.64/4.10	3.40/3.91	3.45/4.20	3.40/4.10		
AEER/ACOP			3.86/4.07	3.52/3.97	3.31/3.80	3.37/4.08	3.32/3.98		
Star rating (Hot/Average/Cold)		Cooling	3.5/2.5/2.5	3.0/2.0/2.0	2.5/2.0/2.0	3.0/2.5/2.5	3.0/2.5/2.5		
		Heating	3.0/2.5/2.0	2.5/2.5/2.0	2.5/1.5/1.0	3.0/2.0/1.5	3.0/2.5/1.5		
TCSPF (Hot/Average/Cold)		Residential	5.182/4.404/4.395	4.581/3.915/3.895	4.366/3.798/3.811	4.689/4.098/4.155	4.666/4.084/4.150		
		Commercial	5.656/5.562/5.849	4.977/4.877/5.116	4.729/4.675/4.923	5.103/5.099/5.407	5.081/5.087/5.401		
HSPF (Hot/Average/Cold)		Residential	4.608/4.173/3.601	4.343/4.072/3.698	4.269/3.304/2.764	4.608/3.661/3.080	4.603/4.024/3.405		
		Commercial	4.599/4.324/3.863	4.331/4.158/3.849	4.260/3.725/3.071	4.599/4.071/3.383	4.597/4.258/3.624		
Electrical parameters	Power supply		Ph/V/Hz	1/220-240/50/60					
	Rated Load Amps (RLA)	Cooling	Amp	6.1/6.1	8.7/8.7	10.5/10.1	12.9/10.6	15.5/12.8	
		Heating	Amp	10.8/9.5	14.7/13.5	15.5/14.6	18.2/14.6	23.0/18.7	
	Breaker Size		Amp	25					
Performance	Air flow (H/M/L)		m ³ /h	3000	4000	4200			
	Sound power level (H/M/L)		dB(A)	64	68	70	73		
	Sound pressure level (H/M/L)		dB(A)	51	55			58	
	External dimensions (W/D/H)		mm	890x340x700			920x372x760	950x370x965	
Shipping dimensions (W/D/H)		mm	1010x455x835			1045x488x890	1050x485x1170		
Net/Shipping weight		kg	50/59	61/70	66/77	79/91			
Compressor type		Twin Rotary (DC Inverter)							
Refrigerant type/charge			R32/1.4	R32/2.2	R32/2.4	R32/2.5			
GWP		675							
Installation	Refrigerant liquid pipe		mm	3xØ6.35	4xØ6.35	5xØ6.35			
	Refrigerant gas pipe		mm	3xØ9.52	3xØ9.52 + 1xØ12.7	3xØ9.52 + 2xØ12.7			
	Total pipe length (Max)		m	50	70	80	100		
	Single pipe length (Max)		m	25					
	Max height between I.U. & O.U		m	15					
	Max height between I.U. & I.U		m	7.5					
	Pre-charge length		m	30	40	50			
	Additional refrigerant charge		g/m	20					
	Working temp.	Cooling (Min-Max)		°C	-10 to +46				
		Heating (Min-Max)		°C	-15 to +24				

Wall-Mounted Specifications

Model AS20PBDHRA (2.0kW)
 Model AS26PBDHRA (2.5kW)
 Model AS35PBDHRA (3.5kW)
 Model AS53PDDHRA (5.0kW)
 Model AS71PDDHRA (7.0kW)

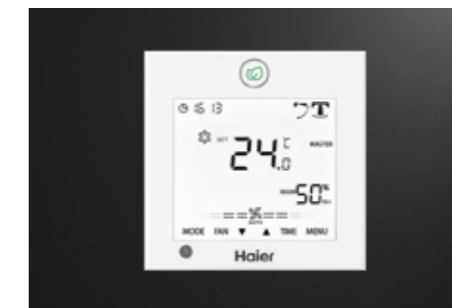
Model YR-HE
 (Included as standard)



Model/Indoor unit		AS20PBDHRA	AS26PBDHRA	AS35PBDHRA	AS53PDDHRA	AS71PDDHRA		
Capacity Electrical	Cooling	kW nom	2.0	2.5	3.5	5.0		
	Heating	kW nom	2.3	3.0	3.7	5.5		
	Sensible heat ratio (cooling)	W	0.76					
	Dehumidifying capacity (cooling)	10 ⁻³ x m ³ /h	1	1.2	1.6	3		
	Power supply	Ph/V/Hz	1/220-240/50					
Indoor unit	Air flow (H/M/L/Q)		m ³ /h	560/480/350	560/480/350	650/550/450	950/830/710	
	External dimensions (WxDxH)		mm	805x200x292			970x220x320	
	Shipping dimensions (WxDxH)		mm	874x363x270			1035x285x285	
	Drainage Pipe (material, I.D/O.D)		mm	PVC, 13/17				
	Control type (Remote/Wired)		Remote YR-HE(S) / Wired YR-E17A(O)					
	Wi-Fi		(S)					
	Sound power level (H/M/L)		dB(A)	58	58	66	67	
	Sound pressure cool (H/M/L)		dB(A)	40/36/32/21	40/36/32/21	40/36/32/22	47/43/37/33	
Piping	Net/Shipping weight		kg	8.7/10.7		11.6/13.8		
	Refrigerant type		kg	R32				
	Refrigerant liquid pipe		mm	6.35 (¼)				
	Refrigerant gas pipe		mm	9.52 (¾)			12.7 (½)	
	Connecting Method		YR-HG					

Optional controllers

Model YR-E17A



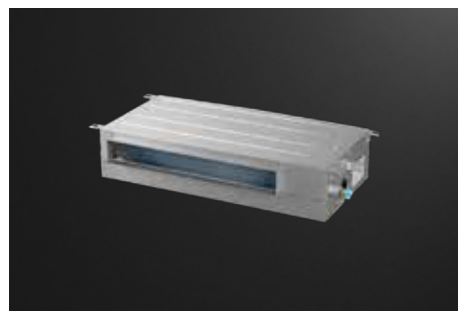
Model YR-E16B



Slim Ducted Specifications

Model AB25S2PS1FA (2.5kW)
 Model AB35S2PS1FA (3.5kW)
 Model AD50S2PS1FA (5.0kW)
 Model AD71S2PS1FA (7.1kW)

Model YR-E17A
 (Included as standard)



Model/Indoor unit			AD25S2PS1FA	AD35S2PS1FA	AD50S2PS1FA	AD71S2PS1FA
Capacity electrical	Cooling	kW nom	2.5	3.5	5.0	7.1
	Heating	kW nom	3.0	4.0	5.5	7.5
	Sensible heat ratio (cooling)	W	0.71			
	Dehumidifying capacity (cooling)	10 ⁻³ x m ³ /h	1.0	1.5	2.2	3.0
	Power supply	Ph/V/Hz	1/220 - 240/50			
Indoor unit	Air flow (H/M/L/Q)	m ³ /h	530/460/390/330	600/480/420/350	900/750/600	1000/850/750
	External static pressure	pa	0/10/20/40	0/10/20/40	0/10/20/40	0/10/20/40
	External dimensions (L/W/H)	mm	850x420x185		1170x420x185	
	Shipping dimensions (L/W/H)	mm	1045x530x260		1365x530x260	
	Drainage Pipe (material. I.D./O.D.)	mm	PVC 27/31			
	Control type (Remote/Wired)		Remote YR-HQS01(O) Wired YR-E17A(S)			
	W-Fi		(O)			
	Sound power level (H/M/L)	dB(A)	50 (51)	53 (51)	54 (54)	57(57)
	Sound pressure cool (H/M/L)	dB(A)	29/28/25	33/28/25	36/34/32	46/44/42
	Net/Shipping weight	kg	16/21		22/28	25.2/28.4
Panel	Model		P1B-890IA/D	P1B-890IA/D	P1B-1210IA/D	P1B-1210IA/D
	External dimensions (WxDxH)	mm	890/190/100 (outlet panel) / 890/290.5/32.4 (inlet panel)		1210/190/100 (outlet panel) / 1210/290.5/32.4 (inlet panel)	
	Shipping dimensions (WxDxH)	mm	938x335x220		1258x335x220	
	Net/Shipping weight	kg	4/5		5/6	
Piping	Refrigerant type		R32			
	Refrigerant liquid pipe	mm	Ø6.35 (¼)		Ø9.52 (¾)	
	Refrigerant gas pipe	mm	Ø9.52		Ø12.7	Ø15.88
	Connecting Method		Flared			

Optional controllers

Model RE-02



Model YR-HRS01



4 Way Cassette Specifications

Model AB25S2PC1FA (2.5kW)
 Model AB35S2PC1FA (3.5kW)
 Model AB50S2PC1FA (5.0kW)

Model AB71S2PC1FA (7.1kW)

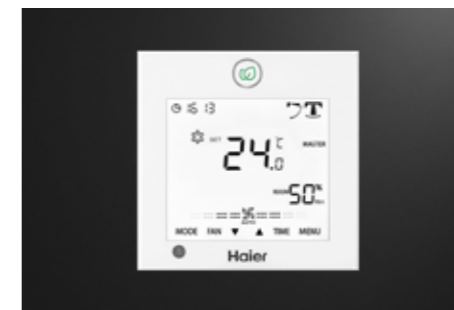
Model YR-HQS01
 (Included as standard)



Model/Indoor unit			AB25S2PC1FA	AB35S2PC1FA	AB50S2PC1FA	AB71S2PC1FA
Capacity electrical	Cooling	kW nom	2.6	3.5	5.0	7.1
	Heating	kW nom	3.2	4.0	5.5	8.0
	Sensible heat ratio (cooling)	W	0.71			
	Dehumidifying capacity (cooling)	10 ⁻³ x m ³ /h	1.0	1.5	2.2	3.0
	Power supply	Ph/V/Hz	1/220 - 240/50			
Indoor unit	Air flow (H/M/L/Q)	m ³ /h	560/450/390/330 (620/520/450/350)	650/520/450/350	700/600/500/400	1260/1070/820/680
	External dimensions (WxDxH)	mm	570/570/260			840/840/240
	Shipping dimensions (WxDxH)	mm	718/680/380			930/930/330
	Drainage Pipe (material. I.D./O.D.)	mm	PVC 26/32			
	Control type (Remote/Wired)		Remote YR-HQS01(S) Wired YR-E17A(O)			
	Wi-Fi		(O)			
	Fresh air hole dimension		95			
	Sound power level (H/M/L)	dB(A)	50	52	55	
	Sound pressure cool (H/M/L)	dB(A)	38/25/23	36/33/30/27	42/37/35/32	42/40/38/35
	Net/Shipping weight	kg	17/20	18.5/22		25.5/30.5
Panel	Model		PB-620KB		PB-950KB	
	External dimensions (WxDxH)	mm	620/620/60		950/950/50	
	Shipping dimensions (WxDxH)	mm	660/660/115		1013/1025/123	
	Net/Shipping weight	kg	2.8/4.5		6.5/9.5	
Piping	Refrigerant type		R32			
	Refrigerant liquid pipe	mm	Ø6.35		Ø9.52	
	Refrigerant gas pipe	mm	Ø9.52	Ø12.7	Ø15.88	
	Connecting Method		Flared			

Optional controllers

Model YR-E17A



Model YR-E16B



Customer Care

Visit the website for more information
New Zealand: haierhome.co.nz

Customer support and service booking
New Zealand: support.haier.co.nz/s/book-a-service



LEARN MORE ABOUT
OUR PRODUCT HERE

Haier